

High Force Safety Air Guns

These hand-held versions of our Super Air Nozzle Clusters and large Super Air Nozzles provide the same strong blowing force with the added convenience of a comfortable soft grip and easy to operate spring-loaded manual valve that automatically shuts off if it is dropped. The Super Blast Safety Air Guns are ideal for long distance, wide area blowoff, cooling and drying applications. All Super Blast Safety Air Guns meet OSHA noise level and pressure requirements.



Super Blast Safety Air Gun™

Add a longer extension pipe to your Super Blast Safety Air Gun.

Create the model number by adding a dash and number of the extension pipe to the Super Blast Safety Air Gun.

Example:

The Model 1213-4 Super Blast Safety Air Gun with a 3' extension would be a Model 1213-4-3.

1213-4 (Super Blast Safety Air Gun)
+ -3 (3' extension)

1213-4-3

Aluminum Extension Pipe

All Super Blast Safety Air Guns with Extension Pipes come fully assembled.

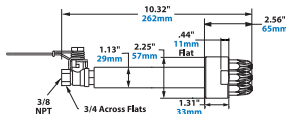
Model#	Model Addition# / Extension Length	
1213-4 3/8 NPT	-3 -6	36" (914mm) 72" (1829mm)
1213-7 1/2 NPT	-3 -6	36" (914mm) 72" (1829mm)
1213-12 1 NPT	-3 -6	36" (914mm) 72" (1829mm)



Model 1213-4 3/8 NPT female

Material: Nozzles - Zinc Aluminum alloy
Body - Aluminum

Airflow Pattern: see Model 1111-4 on page 65.



Air Consumption		Force*		Sound Level
SCFM	SLPM	lbs	Kg	dBA
56	1,585	3.2	1.45	82

* Force measured at 12" (305mm) from target

Sound level measured at 3' (914mm)

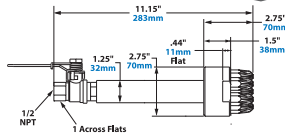
All measurements taken at 80 PSIG (5.5 BAR)



Model 1213-7 1/2 NPT female

Material: Nozzles - Zinc Aluminum alloy
Body - Aluminum

Airflow Pattern: see Model 1111-7 on page 65.



Air Consumption		Force*		Sound Level
SCFM	SLPM	lbs	Kg	dBA
98	2,773	5.7	2.59	85

* Force measured at 12" (305mm) from target

Sound level measured at 3' (914mm)

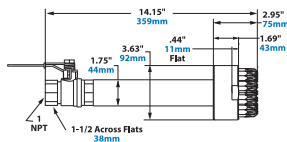
All measurements taken at 80 PSIG (5.5 BAR)



Model 1213-12 1 NPT female

Material: Nozzles - Zinc Aluminum alloy
Body - Aluminum

Airflow Pattern: see Model 1111-12 on page 65.



Air Consumption		Force*		Sound Level
SCFM	SLPM	lbs	Kg	dBA
168	4,754	9.8	4.45	89

* Force measured at 12" (305mm) from target

Sound level measured at 3' (914mm)

All measurements taken at 80 PSIG (5.5 BAR)

Super Blast Safety Air Gun™

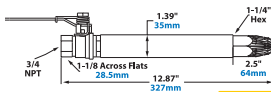


Model 1214 3/4 NPT female

Material: Nozzles - Zinc Aluminum alloy

Airflow Pattern: see Model 1112 on page 63.

Model 1214SS with Stainless Steel Nozzle also available



DOWNLOAD
drawings at
EXAIR.com

Air Consumption		Force*		Sound Level
SCFM	SLPM	lbs	Kg	dBA
91	2,577	4.5	2.04	96

* Force measured at 12" (305mm) from target

Sound level measured at 3' (914mm)

All measurements taken at 80 PSIG (5.5 BAR)

OSHA 3 hour total exposure per day without hearing protection

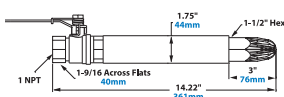


Model 1215 1 NPT female

Material: Nozzle - Zinc Aluminum alloy

Airflow Pattern: see Model 1114 on page 63.

Model 1215SS with Stainless Steel Nozzle also available



DOWNLOAD
drawings at
EXAIR.com

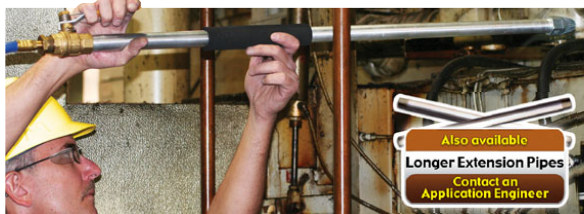
Air Consumption		Force*		Sound Level
SCFM	SLPM	lbs	Kg	dBA
135	3,823	6.6	3.01	99

* Force measured at 12" (305mm) from target

Sound level measured at 3' (914mm)

All measurements taken at 80 PSIG (5.5 BAR)

OSHA 2 hour total exposure per day without hearing protection



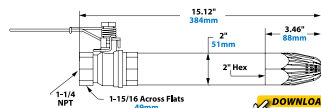
The 3' extension on the Model 1215-3 Super Blast Safety Air Gun helps an operator provide maximum blow off force to remote, tight or difficult to access areas.



Model 1216 1-1/4 NPT female

Material: Nozzle - Zinc Aluminum alloy

Airflow Pattern: see Model 1116 on page 64.



DOWNLOAD
drawings at
EXAIR.com

Model	Air Consumption		Force*		Sound Level
	SCFM	SLPM	lbs	Kg	dBA
1216	188	5,324	9.4	4.25	102
1217	300	8,495	15	6.80	106
1218	460	13,026	23	10.43	109

* Force measured at 12" (305mm) from target

Sound level measured at 3' (914mm)

All measurements taken at 80 PSIG (5.5 BAR)

Model 1216 OSHA 1 hour total exposure per day without hearing protection

Model 1217 and 1218 OSHA 1/2 hour total exposure per day without hearing protection

Model 1217 and 1218 OSHA 1/2 hour total exposure per day without hearing protection

Model 1217 and 1218 OSHA 1/2 hour total exposure per day without hearing protection

Model 1217 and 1218 OSHA 1/2 hour total exposure per day without hearing protection

Model 1217 and 1218 OSHA 1/2 hour total exposure per day without hearing protection

Model 1217 and 1218 OSHA 1/2 hour total exposure per day without hearing protection

Model 1217 and 1218 OSHA 1/2 hour total exposure per day without hearing protection

Model 1217 and 1218 OSHA 1/2 hour total exposure per day without hearing protection

Model 1217 and 1218 OSHA 1/2 hour total exposure per day without hearing protection

Model 1217 and 1218 OSHA 1/2 hour total exposure per day without hearing protection

Model 1217 and 1218 OSHA 1/2 hour total exposure per day without hearing protection

Model 1217 and 1218 OSHA 1/2 hour total exposure per day without hearing protection

Model 1217 and 1218 OSHA 1/2 hour total exposure per day without hearing protection

Model 1217 and 1218 OSHA 1/2 hour total exposure per day without hearing protection

Model 1217 and 1218 OSHA 1/2 hour total exposure per day without hearing protection

Model 1217 and 1218 OSHA 1/2 hour total exposure per day without hearing protection

Model 1217 and 1218 OSHA 1/2 hour total exposure per day without hearing protection

Model 1217 and 1218 OSHA 1/2 hour total exposure per day without hearing protection

Model 1217 and 1218 OSHA 1/2 hour total exposure per day without hearing protection

Model 1217 and 1218 OSHA 1/2 hour total exposure per day without hearing protection

Model 1217 and 1218 OSHA 1/2 hour total exposure per day without hearing protection

Model 1217 and 1218 OSHA 1/2 hour total exposure per day without hearing protection

Model 1217 and 1218 OSHA 1/2 hour total exposure per day without hearing protection

Model 1217 and 1218 OSHA 1/2 hour total exposure per day without hearing protection

Model 1217 and 1218 OSHA 1/2 hour total exposure per day without hearing protection

Model 1217 and 1218 OSHA 1/2 hour total exposure per day without hearing protection

Model 1217 and 1218 OSHA 1/2 hour total exposure per day without hearing protection

Model 1217 and 1218 OSHA 1/2 hour total exposure per day without hearing protection

Model 1217 and 1218 OSHA 1/2 hour total exposure per day without hearing protection

Model 1217 and 1218 OSHA 1/2 hour total exposure per day without hearing protection

Model 1217 and 1218 OSHA 1/2 hour total exposure per day without hearing protection

Model 1217 and 1218 OSHA 1/2 hour total exposure per day without hearing protection

Model 1217 and 1218 OSHA 1/2 hour total exposure per day without hearing protection

Model 1217 and 1218 OSHA 1/2 hour total exposure per day without hearing protection

Model 1217 and 1218 OSHA 1/2 hour total exposure per day without hearing protection

Model 1217 and 1218 OSHA 1/2 hour total exposure per day without hearing protection

Model 1217 and 1218 OSHA 1/2 hour total exposure per day without hearing protection

Model 1217 and 1218 OSHA 1/2 hour total exposure per day without hearing protection

Model 1217 and 1218 OSHA 1/2 hour total exposure per day without hearing protection

Model 1217 and 1218 OSHA 1/2 hour total exposure per day without hearing protection

Model 1217 and 1218 OSHA 1/2 hour total exposure per day without hearing protection

Model 1217 and 1218 OSHA 1/2 hour total exposure per day without hearing protection

Model 1217 and 1218 OSHA 1/2 hour total exposure per day without hearing protection

Model 1217 and 1218 OSHA 1/2 hour total exposure per day without hearing protection

Model 1217 and 1218 OSHA 1/2 hour total exposure per day without hearing protection

Safety
Air Guns

Add a longer extension pipe to your Super Blast Safety Air Gun.

Create the model number by adding a dash and number of the extension pipe to the Super Blast Safety Air Gun.

Example:

The Model 1214 Super Blast Safety Air Gun with a 3' extension would be a Model 1214-3.

1214 (Super Blast Safety Air Gun)
+ -3 (3' extension)

1214-3

Aluminum Extension Pipe

All Super Blast Safety Air Guns with Extension Pipes come fully assembled.

Model#	Model Addition # / Extension Length
1214	-3 36" (914mm) -6 72" (1829mm)
1214SS	-3 36" (914mm) -6 72" (1829mm)
1215	-3 36" (914mm) -6 72" (1829mm)
1215SS	-3 36" (914mm) -6 72" (1829mm)
1216	-3 36" (914mm) -6 72" (1829mm)
1217	-3 36" (914mm) -6 72" (1829mm)
1218	-3 36" (914mm) -6 72" (1829mm)

Model 1218 1-1/4 NPT female

Material: Nozzle - Zinc Aluminum alloy

Airflow Pattern: see Model 1120 on page 64.

